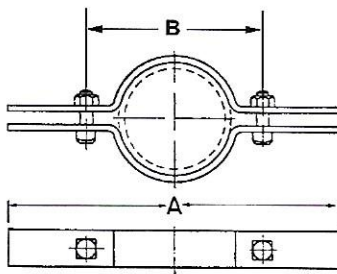


FIG. 50 STANDARD RISER CLAMP



- Material:** Carbon steel, 304 (50SS) and 316 (50SX) stainless steel.
- Finish:** Plain, painted, electro-galvanized, hot-dip galvanized, plastic coated.
- Service:** Designed for supporting and stabilizing vertical pipe runs.
- Approvals:** U.L. - U.L.C. listed (sizes 2" - 8"). Complies with Federal Specification WW-H-171-E (Type# 8), A-A-1192 A (Type# 8) and Manufacturers' Standardization Society MSS SP-58 and SP-69 (Type# 8).
- Ordering:** Specify pipe size, figure number and finish.
- Notes:** Plastic coated riser clamps are completely plastic coated with zinc plated hardware. The plastic coating prevents pipe from coming in contact with the clamp and is designed to reduce noise, vibration and prevent electrolysis between pipe and clamp. Stainless steel riser clamps are recommended for applications where protection from corrosive environments is needed.

PIPE SIZE	PIPE OD	MATERIAL SIZE	BOLT	A	B	WGT EACH (lbs)	MAX REC LOAD (lbs)
1/2	0.840	8ga x 1.0	3/8	8 5/8	2 1/8	0.88	220
3/4	1.050	8ga x 1.0	3/8	8 13/16	2 5/16	0.92	220
1	1.315	8ga x 1.0	3/8	9 1/16	2 5/8	0.94	220
1 1/4	1.660	8ga x 1.0	3/8	9 7/16	2 15/16	1.00	250
1 1/2	1.900	8ga x 1.0	3/8	10	3 7/16	1.04	250
2	2.375	8ga x 1.0	3/8	10 9/16	4	1.14	300
2 1/2	2.875	3ga x 1.0	3/8	11 1/8	4 9/16	1.60	400
3	3.500	3ga x 1.0	3/8	11 13/16	5 1/4	1.70	500
3 1/2	4.000	3ga x 1.0	1/2	13	6	2.06	600
4	4.500	3ga x 1.0	1/2	13 5/8	6 5/8	2.20	750
5	5.563	3ga x 1.5	1/2	14 1/8	7 5/8	3.40	1500
6	6.625	3ga x 1.5	1/2	15 3/8	8 7/8	3.72	1600
8	8.625	3/8 x 1.5	5/8	18 5/8	12	7.22	2500
10	10.750	3/8 x 2.0	5/8	21	14 1/2	10.94	2500
12	12.750	1/2 x 2.0	5/8	22 3/4	16 3/4	16.10	2700
14	14.000	1/2 x 2.0	5/8	24	17 7/8	17.00	2700
16	16.000	5/8 x 2 1/2	3/4	26	21	29.16	2900
18	18.000	5/8 x 2 1/2	3/4	28	23 1/8	31.91	2900
20	20.000	5/8 x 2 1/2	3/4	30	25	35.00	2900